

# DISSIDENT

Dissident 991.1 Ducktail Spoiler Fitting

# Dissident 991.1 Ducktail Spoiler Fitting

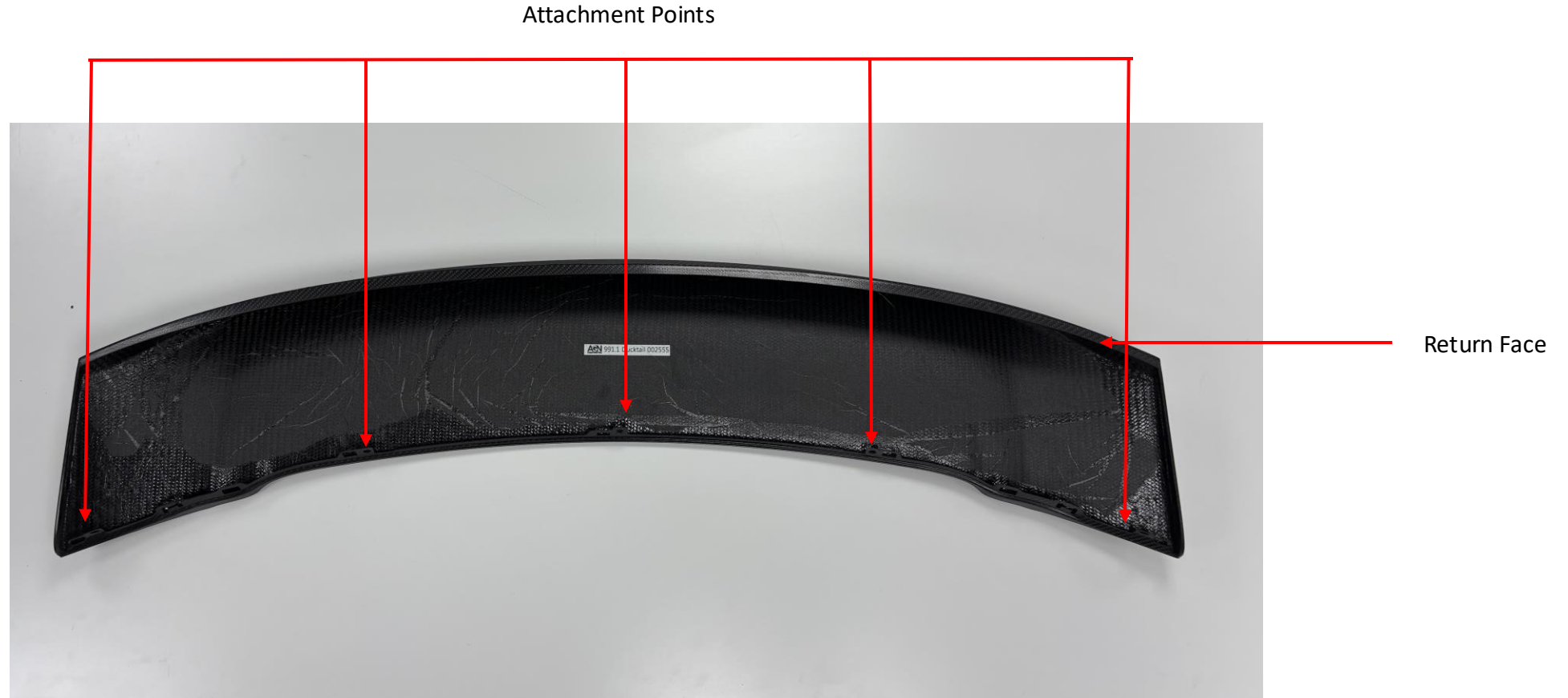


- This guide illustrates the preferred approach utilised by Dissident Automotive Ltd to fit our carbon fibre Ducktail spoiler



# Dissident 991.1 Ducktail Spoiler Fitting

- The ducktail features 5 attachment points in the leading edge of the underside and a return face that slides over the standard lower plastic moulding (not the original spoiler which must be removed) locking the ducktail into place.



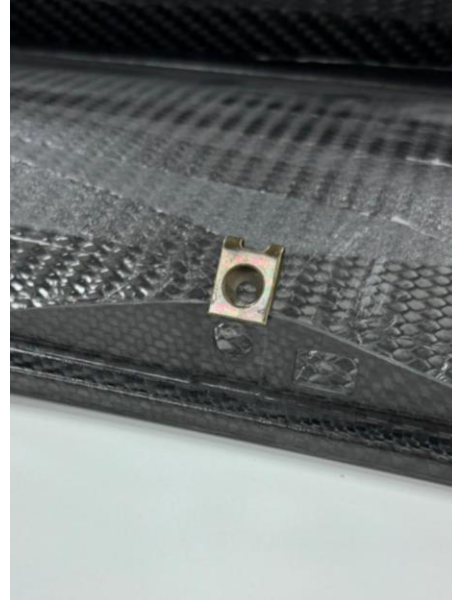
# Dissident 991.1 Ducktail Spoiler Fitting



- The standard spoiler should be raised to the up position which can be done manually from inside the car.
- The 5 attachment / bolt points can be seen along the leading edge. They each have a plastic blanking shield which should be removed to allow access to the bolt beneath
- The standard attachment bolt is a torx T20
- Once all 5 bolts are undone the standard spoiler should be slid backward and then lifted off the car leaving the underside standard spoiler moulding in place

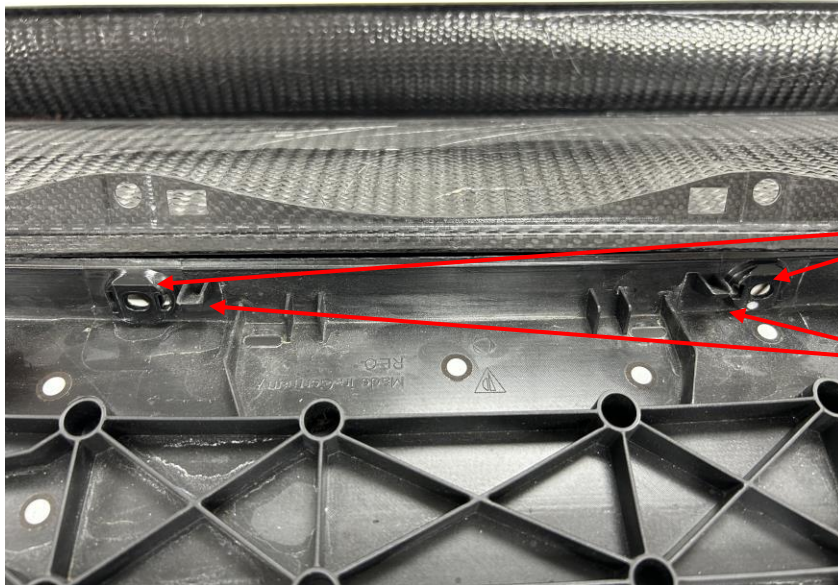


## Dissident 991.1 Ducktail Spoiler Fitting



- With the standard spoiler removed the metal clips should be slid off from each of its mounting tabs
- They should then be added to each of the Dissident spoiler mounting tabs being clipped and slid over each of the circular mounting holes as pictured above until all 5 are in place.

## Dissident 991.1 Ducktail Spoiler Fitting



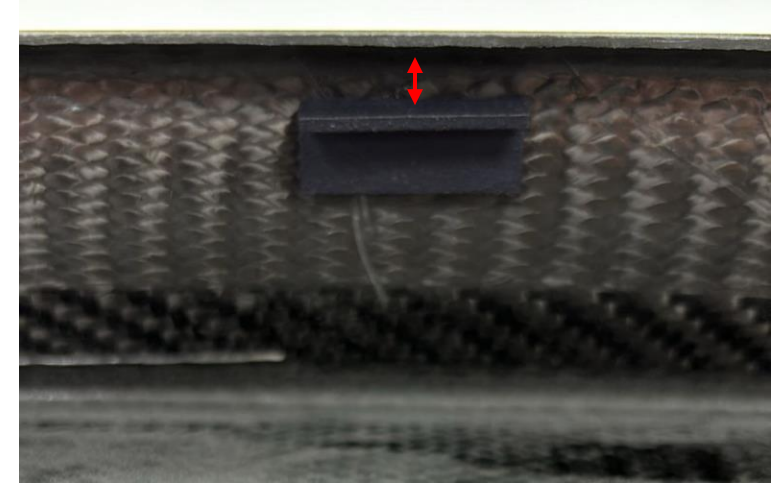
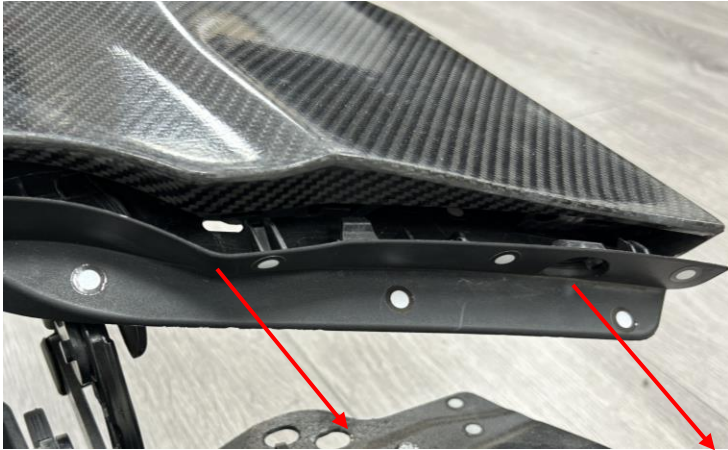
Bolt Hole

Locating Pin



- The ducktail spoiler can now be added to the car. In the lower standard spoiler moulding you can see a male locating pin and a bolt hole at each of the 5 attachment points. The pin should be aligned with the square hole in the mounting tab and the bolt hole with the with the metal clip added to the mounting tab.

## Dissident 991.1 Ducktail Spoiler Fitting



- The ducktail spoiler can now be manipulated onto the mounting points and slid forward to locate
- The ducktail spoiler uses the shape along the lower trailing edge to lock itself into position as per the standard plastic spoiler over the standard plastic lower moulding. The standard lower moulding should slot between the two surfaces shown in the far right picture above when the spoiler is slid forward.
- This movement forwards should require no significant force. If you encounter any heavy resistance check you are sliding over the locating pins correctly and locating correctly into the trailing edge of the spoiler.
- Re insert all 5 mounting bolts. Initially tighten the 4 most central bolts.

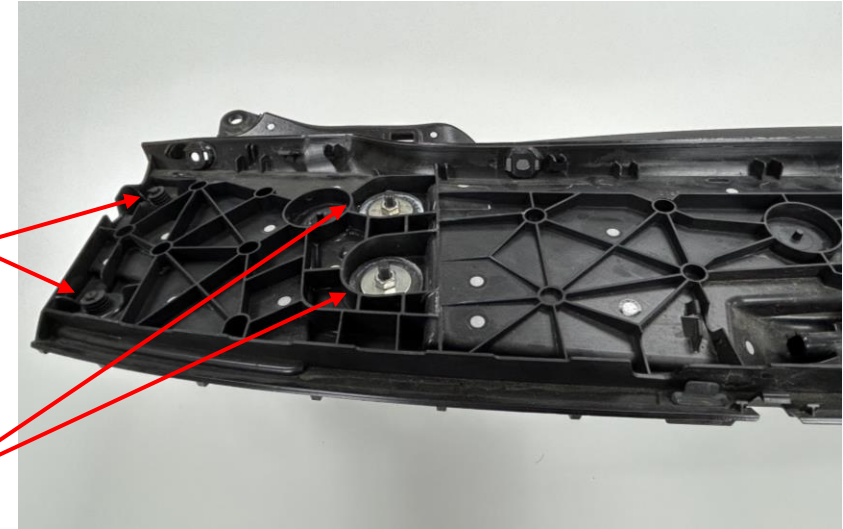


# Dissident 991.1 Ducktail Spoiler Fitting



Panel height fine adjustment

Lateral & Longitudinal fine adjustment x 4



- For best fitment it is important the lefthand and righthand corners of the ducktail are firmly compressed together with the lower plastic moulding to ensure they are tightly seated when tightening the most outward 2 fixing bolts on each side as per the left hand image.
- Fine adjustments can be made prior to fitting the spoiler on the main plastic moulding using the longitudinal & lateral adjustment fixings. Shown in the picture on the right.
- Further final panel height adjustments to the rear quarters and engine cover can be made with the small black grub screw adjustments as shown in the righthand image

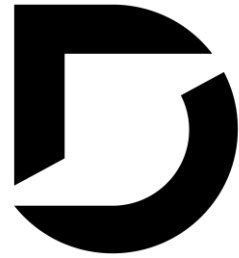


# Dissident 991.1 Ducktail Spoiler Fitting



- Once Properly attached the spoiler can be lowered and is ready for use
- Alignment should be confirmed to the rear quarters / engine cover. If adjustment is required then loosen all 5 mounting bolts & use the fine adjustments as shown on the previous step and manipulate the spoiler as required until suitable fitment is achieved and re-tighten the bolts.
- Ensure secure attachment prior to any use.





# DISSIDENT

Dissident Masking Approach 991.1 Ducktail Spoiler

# Dissident Ducktail Spoiler 991.1 Masking Approach



- This guide illustrates the preferred approach utilized by Dissident to mask our ducktail spoiler for painting in our launch edition scheme.
- All approaches & techniques are a guide only. There is no guarantee implied or given as to the quality of the painted product. It is the responsibility of the painter to ensure the desired end quality is achieved. They may wish to apply their own preferred approaches. No reference to any material surface preparations or paint products is made in the document, that is the painters complete discretion.



# Dissident Ducktail Spoiler Masking Approach

- A digitally cut paper template is included with each kit. This template is to the exact size of the area of the visual carbon spaces on the top and rear faces of the ducktail spoiler. It is NOT self adhesive.





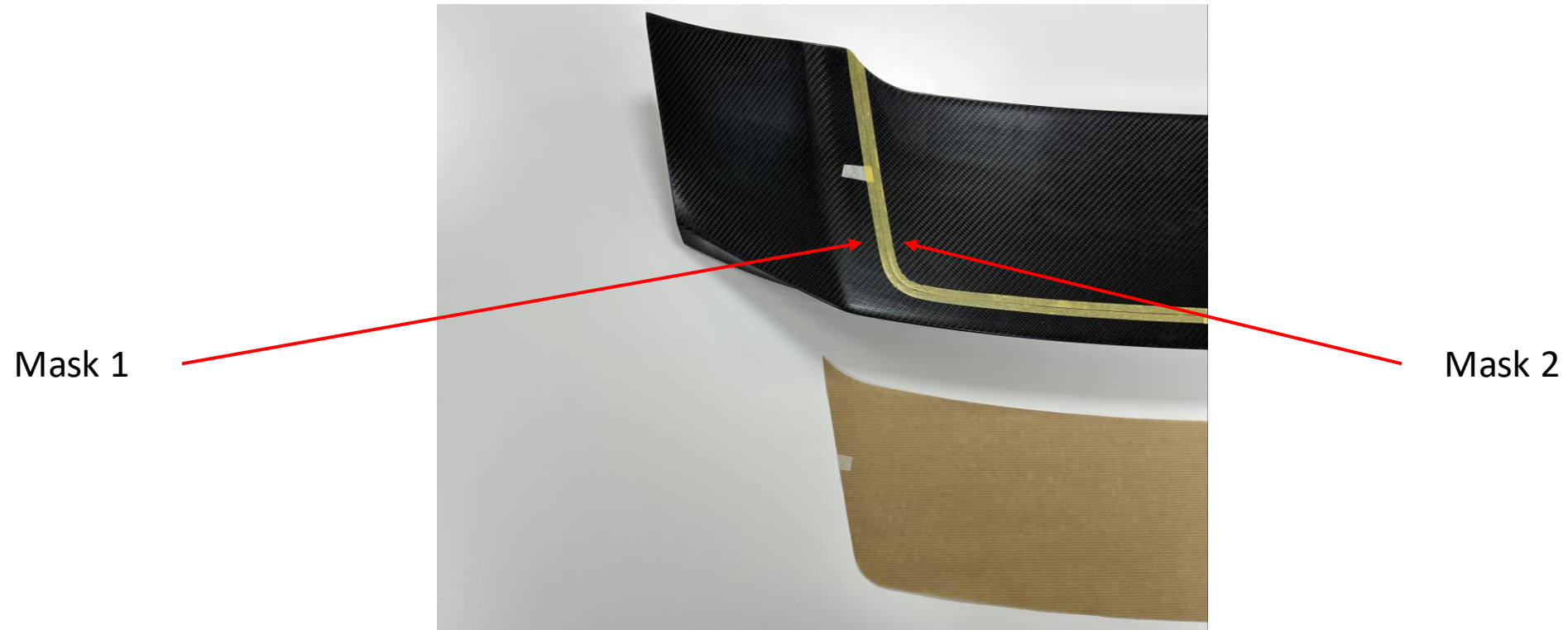
# Dissident Ducktail Spoiler Masking Approach

- The paper template should be gently tacked into position using masking tape or another suitable equivalent
- A fine line masking tape should then be used to trace the outer edge of the template. The paper template mask can then be removed.



# Dissident Ducktail Spoiler Masking Approach

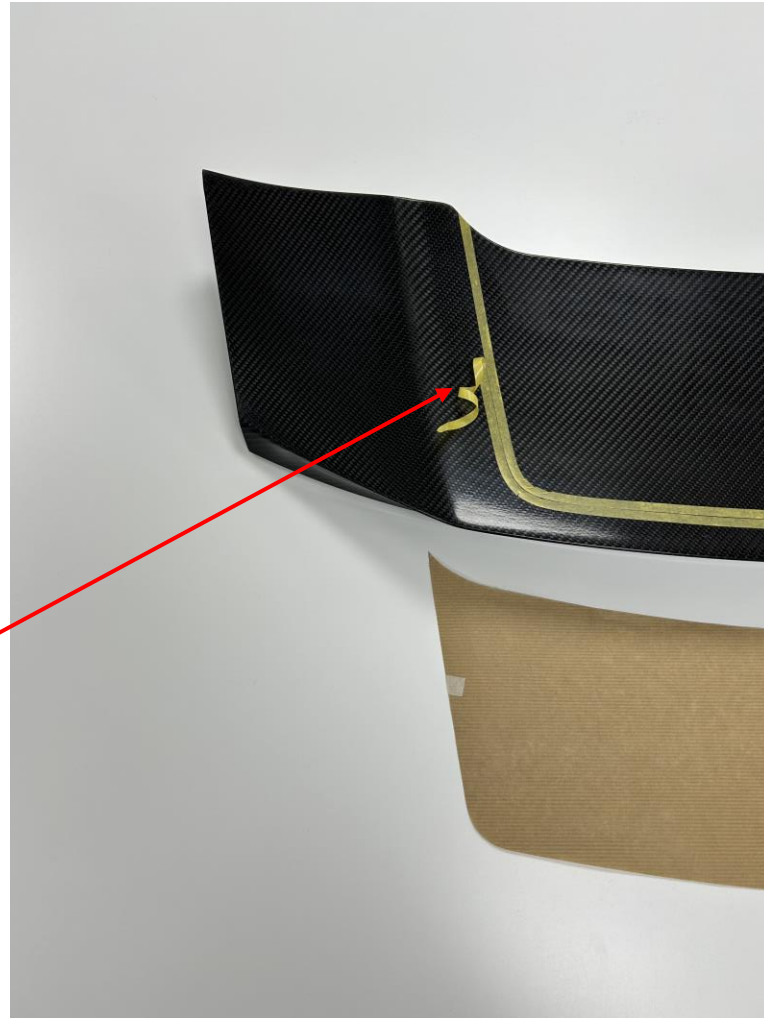
- With the paper template removed a second strip of fine line mask (Mask 2) should be applied inside but immediately up to the inner boundary of the original tape (Mask 1). This will serve to be the coloured paint boundary when painted later.



# Dissident Ducktail Spoiler Masking Approach

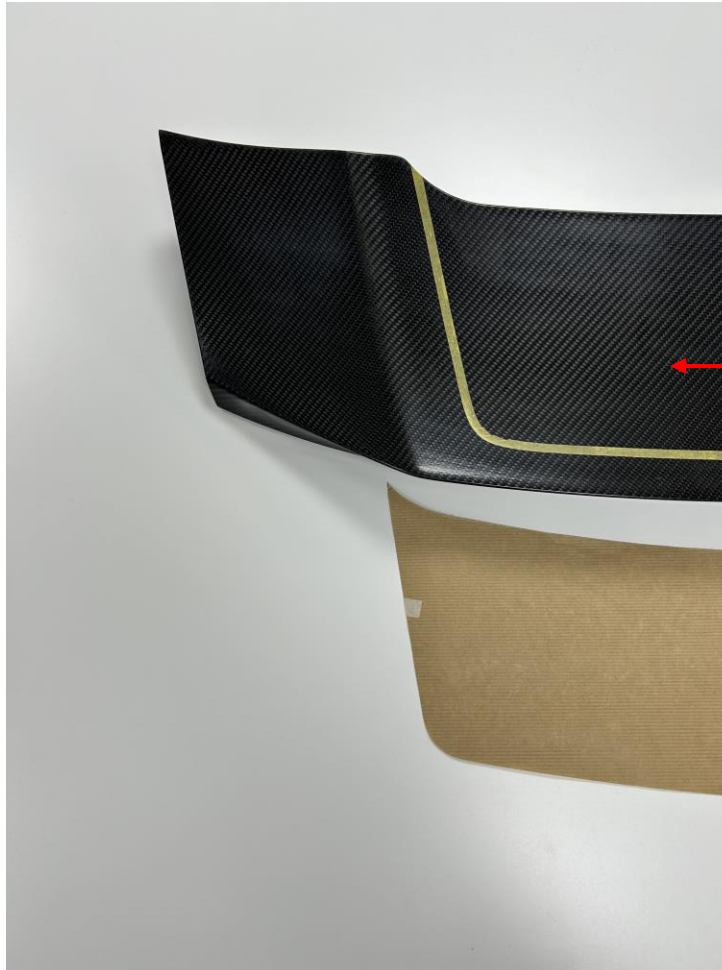
- The outer fine line mask (Mask 1) is now removed

Mask 1



# Dissident Ducktail Spoiler Masking Approach

- With the outer strip now removed the inner visual carbon area area can be masked to keep it clear of any body colour paint.



Mask this visual carbon area completely to ensure no coloured paint can reach the surface of the carbon fibre



# Dissident Ducktail Spoiler Masking Approach

- Prior to painting ensure the mask line aligns correctly with the Engine cover panel in the critical area shown. If it does not then make adjustments until suitable.



Critical mask alignment area